

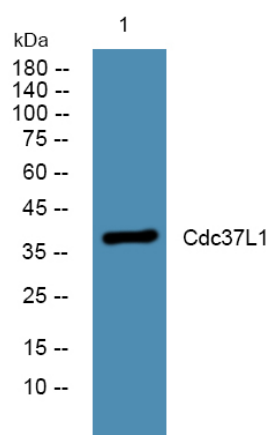


# Cdc37L1 Polyclonal Antibody

<b>Catalog No</b>	YP-Ab-16684
<b>Isotype</b>	IgG
<b>Reactivity</b>	Human;Rat
<b>Applications</b>	WB;ELISA
<b>Gene Name</b>	CDC37L1
<b>Protein Name</b>	Hsp90 co-chaperone Cdc37-like 1
<b>Immunogen</b>	Synthesized peptide derived from Cdc37L1 . at AA range: 80-160
<b>Specificity</b>	Cdc37L1 Polyclonal Antibody detects endogenous levels of Cdc37L1 protein.
<b>Formulation</b>	Liquid in PBS containing 50% glycerol, 0.5% BSA and 0.02% sodium azide.
<b>Source</b>	Polyclonal, Rabbit,IgG
<b>Purification</b>	The antibody was affinity-purified from rabbit antiserum by affinity-chromatography using epitope-specific immunogen.
<b>Dilution</b>	Western Blot: 1/500 - 1/2000. ELISA: 1/40000. Not yet tested in other applications.
<b>Concentration</b>	1 mg/ml
<b>Purity</b>	≥90%
<b>Storage Stability</b>	-20°C/1 year
<b>Synonyms</b>	CDC37L1; CDC37B; HARC; Hsp90 co-chaperone Cdc37-like 1; Hsp90-associating relative of Cdc37
<b>Observed Band</b>	38kD
<b>Cell Pathway</b>	Cytoplasm .
<b>Tissue Specificity</b>	Expressed in brain, heart, kidney, liver, placenta and skeletal muscle.
<b>Function</b>	function:Co-chaperone that binds to numerous proteins and promotes their interaction with Hsp70 and Hsp90.,sequence caution:Translated as Cys.,similarity:Belongs to the CDC37 family.,subunit:Self-associates. Forms complexes with Hsp70 and Hsp90. Interacts with CDC37, FKBP4, PPID and STIP1.,tissue specificity:Expressed in brain, heart, kidney, liver, placenta and skeletal muscle.,
<b>Background</b>	CDC37L1 is a cytoplasmic phosphoprotein that exists in complex with HSP90 (HSPCA; MIM 140571) as well as several other proteins involved in HSP90-mediated protein folding (Scholz et al., 2001 [PubMed 11413142]).[supplied by OMIM, Mar 2008],
<b>matters needing attention</b>	Avoid repeated freezing and thawing!

**Usage suggestions**

This product can be used in immunological reaction related experiments. For more information, please consult technical personnel.

**Products Images**

Western blot analysis of lysates from KB cells, primary antibody was diluted at 1:1000, 4° over night